

GiS  
系列

GiS005

GiS006  
GiS007  
GiS008  
GiS009  
GiS010  
GiS011  
GiS012  
GiS013  
GiS014  
GiS015  
GiS016  
GiS017  
GiS018  
GiS019  
GiS020

Internal  
Gripper  
Abatement

氣囊  
內孔夾具



### Operating mode:

The internal grippers dip into drillings, enlarge their external diameter by expansion of the silicone membrane, under pressure, and thus frictionally engaged hold to the bore wall. When pressure is switched off, the silicone membrane self-reliant retracts into the grippers inside due to its elastic behavior.

### Advantages:

Minimum installation size possible

Width across flats for assembly

Minimum installation depth

Low gripper weight

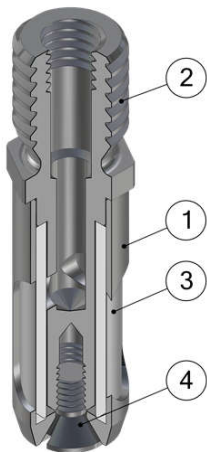
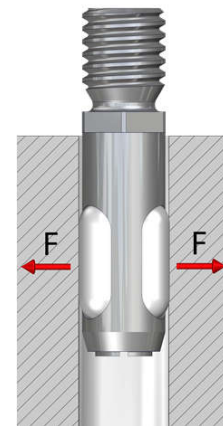
Simple gripper principle

Cost-efficient

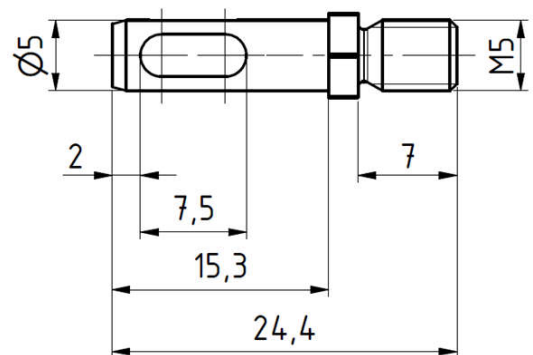
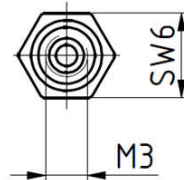
Quick diaphragm replacement possible

Indirect request via pressure switch in the supply line possible

Technical specifications	GIS005
Grip force (at 6 bar) [N]	4
Bore diameter [mm]	5,1 – 6,0
Allowed component weight [kg]	0,4
Gripper weight [kg]	0.003
Compressed air connection Ø	M3
Assembly Ø	M5
Stroke cycles at ideal application conditions	500.000
Width across flats [mm]	SW6
Freelength a [mm]	2



Pos.	Description
1	Hull
2	Arbor
3	Tube
4	Counter sunk screw



### Internal Gripper Abatement Ø005...

G-GIS005 External diameter 5, screw thread M5

### Replacement tube

EG-GI005-S for internal gripper counter bore GIS005

© 目錄上所有的功能尺寸及公差僅供參考，本公司保有變更之權力並不事先通知。 ● 請有任何疑問與採購需求請洽詢本公司。

# GiS006 氣囊內孔夾具 Internal Gripper Abatement



### Operating mode:

The internal grippers dip into drillings, enlarge their external diameter by expansion of the silicone membrane, under pressure, and thus frictionally engaged hold to the bore wall. When pressure is switched off, the silicone membrane self-reliant retracts into the grippers inside due to its elastic behavior.

### Advantages:

- Minimum installation size possible
- Width across flats for assembly
- minimum installation depth
- low gripper weight
- Simple gripper principle
- cost-efficient
- quick diaphragm replacemet possible
- Indirect request via pressure switch in the supply line possible

## GiS 系列

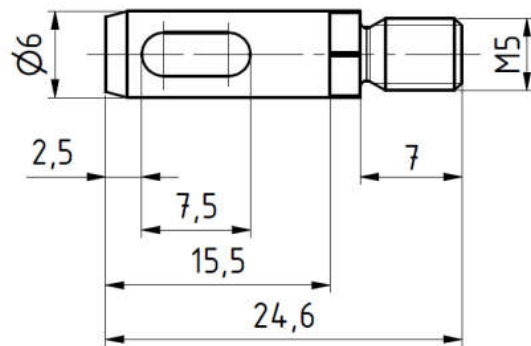
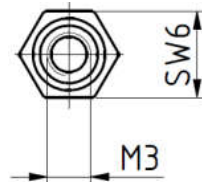
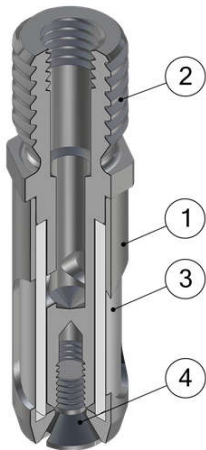
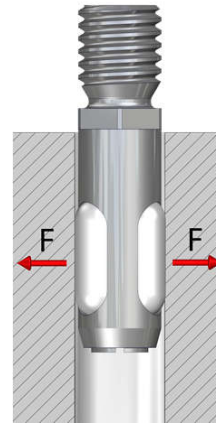
### GiS005 GiS006

- GiS007
- GiS008
- GiS009
- GiS010
- GiS011
- GiS012
- GiS013
- GiS014
- GiS015
- GiS016
- GiS017
- GiS018
- GiS019
- GiS020

### Internal Gripper Abatement

### 氣囊內孔夾具

Technical specifications	GIS006
Grip force (at 6 bar) [N]	5
Bore diameter [mm]	6,1 – 7,0
Allowed component weight [kg]	0,5
Gripper weight [kg]	0.003
Compressed air connection Ø	M3
Assembly Ø	M5
Stroke cycles at ideal application conditions	500.000
Width across flats [mm]	SW6
Freelenght a [mm]	2,5



Pos.	Description
1	Hull
2	Arbor
3	Tube
4	Counter sunk screw

### Internal Gripper Abatement Ø005...

G-GIS006 External diameter 6, screw thread M5

### Replacement tube

EG-GI006-S for internal gripper counter bore GIS006

### GiS 系列

GiS005

GiS006

### GiS007

GiS008

GiS009

GiS010

GiS011

GiS012

GiS013

GiS014

GiS015

GiS016

GiS017

GiS018

GiS019

GiS020

Internal  
Gripper  
Abatement

氣囊  
內孔夾具



#### Operating mode:

The internal grippers dip into drillings, enlarge their external diameter by expansion of the silicone membrane, under pressure, and thus frictionally engaged hold to the bore wall. When pressure is switched off, the silicone membrane self-reliant retracts into the grippers inside due to its elastic behavior.

#### Advantages:

Minimum installation size possible

Width across flats for assembly

minimum installation depth

low gripper weight

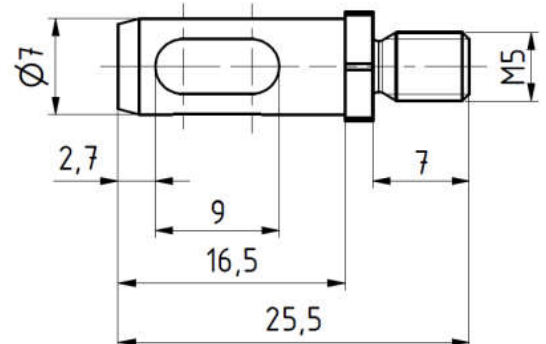
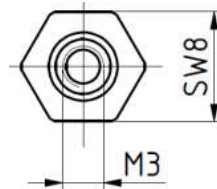
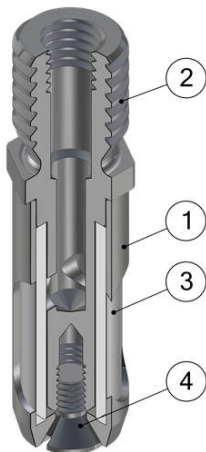
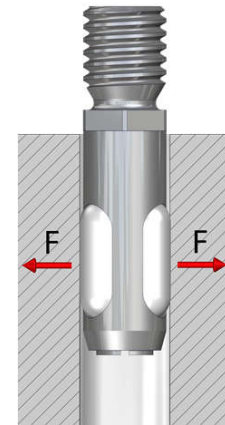
Simple gripper principle

cost-efficient

quick diaphragm replacement possible

Indirect request via pressure switch in the supply line possible

Technical specifications	GiS007
Grip force (at 6 bar) [N]	7
Bore diameter [mm]	7,1 – 8,0
Allowed component weight [kg]	0,7
Gripper weight [kg]	0.005
Compressed air connection Ø	M3
Assembly Ø	M5
Stroke cycles at ideal application conditions	500.000
Width across flats [mm]	SW8
Freelenght a [mm]	2,7



Pos.	Description
1	Hull
2	Arbor
3	Tube
4	Counter sunk screw

#### Internal Gripper Abatement Ø005...

G-GiS007 External diameter 7, screw thread M5

#### Replacement tube

EG-GI007-S for internal gripper counter bore GiS007

© 目錄上所有的功能尺寸及公差僅供參考，本公司保有變更之權力並不事先通知。 ● 請有任何疑問與特殊需求請洽詢本公司。

# GiS008 氣囊內孔夾具 Internal Gripper Abatement



### Operating mode:

The internal grippers dip into drillings, enlarge their external diameter by expansion of the silicone membrane, under pressure, and thus frictionally engaged hold to the bore wall. When pressure is switched off, the silicone membrane self-reliant retracts into the grippers inside due to its elastic behavior.

### Advantages:

- Minimum installation size possible
- Width across flats for assembly
- minimum installation depth
- low gripper weight
- Simple gripper principle
- cost-efficient
- quick diaphragm replacemet possible
- Indirect request via pressure switch in the supply line possible

## GiS 系列

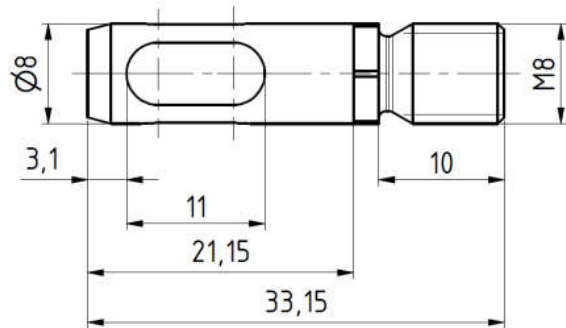
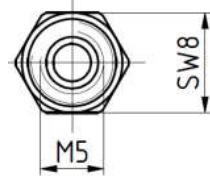
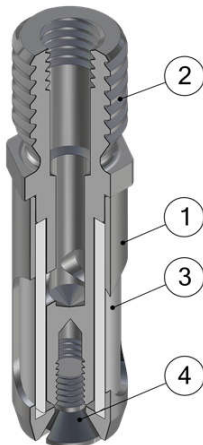
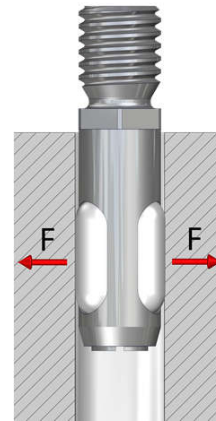
## GiS008

- GiS005
- GiS006
- GiS007
- GiS009
- GiS010
- GiS011
- GiS012
- GiS013
- GiS014
- GiS015
- GiS016
- GiS017
- GiS018
- GiS019
- GiS020

## Internal Gripper Abatement

## 氣囊 內孔夾具

Technical specifications	GIS008
Grip force (at 6 bar) [N]	17
Bore diameter [mm]	8,1 – 9,0
Allowed component weight [kg]	1,7
Gripper weight [kg]	0.008
Compressed air connection Ø	M5
Assembly Ø	M8
Stroke cycles at ideal application conditions	500.000
Width across flats [mm]	SW8
Freelenght a [mm]	3,1



Pos.	Description
1	Hull
2	Arbor
3	Tube
4	Counter sunk screw

### Internal Gripper Abatement Ø005...

G-GIS008 External diameter 8, screw thread M8

### Replacement tube

EG-GI008-S for internal gripper counter bore GIS008

### GiS 系列

GiS005  
GiS006  
GiS007  
GiS008

### GiS009

GiS010  
GiS011  
GiS012  
GiS013  
GiS014  
GiS015  
GiS016  
GiS017  
GiS018  
GiS019  
GiS020

Internal  
Gripper  
Abatement

氣囊  
內孔夾具



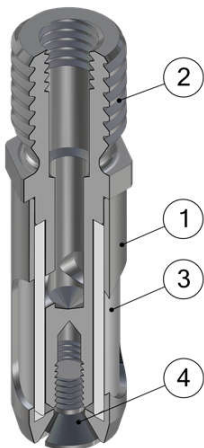
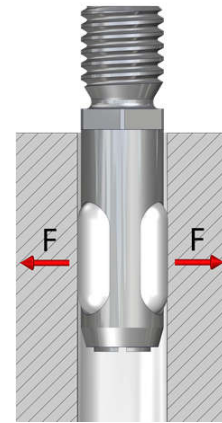
#### Operating mode:

The internal grippers dip into drillings, enlarge their external diameter by expansion of the silicone membrane, under pressure, and thus frictionally engaged hold to the bore wall. When pressure is switched off, the silicone membrane self-reliant retracts into the grippers inside due to its elastic behavior.

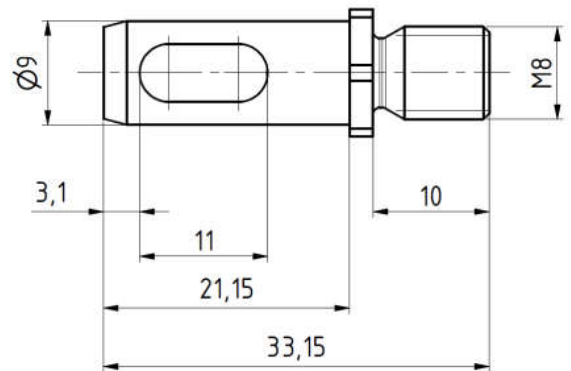
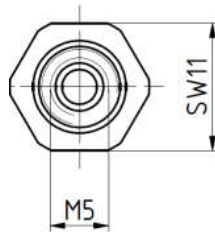
#### Advantages:

- Minimum installation size possible
- Width across flats for assembly
- minimum installation depth
- low gripper weight
- Simple gripper principle
- cost-efficient
- quick diaphragm replacement possible
- Indirect request via pressure switch in the supply line possible

Technical specifications	GIS009
Grip force (at 6 bar) [N]	17
Bore diameter [mm]	9,1 – 10,0
Allowed component weight [kg]	1,7
Gripper weight [kg]	0.01
Compressed air connection Ø	M5
Assembly Ø	M8
Stroke cycles at ideal application conditions	500.000
Width across flats [mm]	SW11
Freelength a [mm]	3,1



Pos.	Description
1	Hull
2	Arbor
3	Tube
4	Counter sunk screw



#### Internal Gripper Abatement Ø005...

G-GIS009 External diameter 9, screw thread M8

#### Replacement tube

EG-GI009-S for internal gripper counter bore GIS009

# GiS010 氣囊內孔夾具 Internal Gripper Abatement



### Operating mode:

The internal grippers dip into drillings, enlarge their external diameter by expansion of the silicone membrane, under pressure, and thus frictionally engaged hold to the bore wall. When pressure is switched off, the silicone membrane self-reliant retracts into the grippers inside due to its elastic behavior.

### Advantages:

- Minimum installation size possible
- Width across flats for assembly
- minimum installation depth
- low gripper weight
- Simple gripper principle
- cost-efficient
- quick diaphragm replacemet possible
- Indirect request via pressure switch in the supply line possible

## GiS 系列

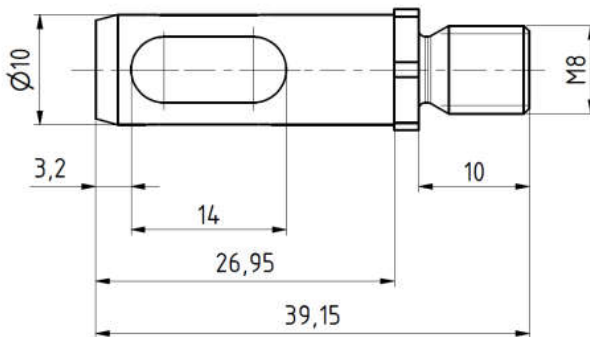
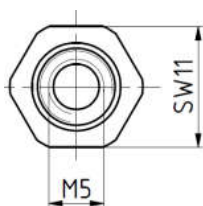
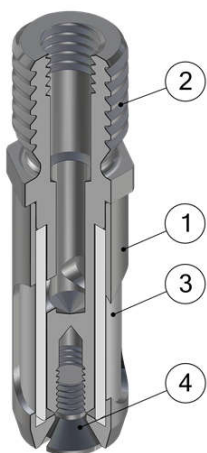
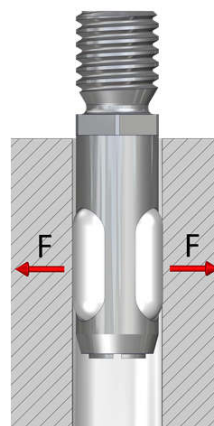
- GiS005
- GiS006
- GiS007
- GiS008
- GiS009
- GiS010**
- GiS011
- GiS012
- GiS013
- GiS014
- GiS015
- GiS016
- GiS017
- GiS018
- GiS019
- GiS020

## GiS010

## Internal Gripper Abatement

## 氣囊 內孔夾具

Technical specifications	GIS010
Grip force (at 6 bar) [N]	20
Bore diameter [mm]	10,1 – 11,0
Allowed component weight [kg]	2
Gripper weight [kg]	0.013
Compressed air connection Ø	M5
Assembly Ø	M8
Stroke cycles at ideal application conditions	500.000
Width across flats [mm]	SW11
Freelenght a [mm]	3,2



Pos.	Description
1	Hull
2	Arbor
3	Tube
4	Counter sunk screw

### Internal Gripper Abatement Ø005...

G-GiS010 External diameter 10, screw thread M8

### Replacement tube

EG-Gi010-S for internal gripper counter bore GIS010

### GiS 系列

- GiS005
- GiS006
- GiS007
- GiS008
- GiS009
- GiS010
- GiS011**
- GiS012
- GiS013
- GiS014
- GiS015
- GiS016
- GiS017
- GiS018
- GiS019
- GiS020

Internal  
Gripper  
Abatement

氣囊  
內孔夾具



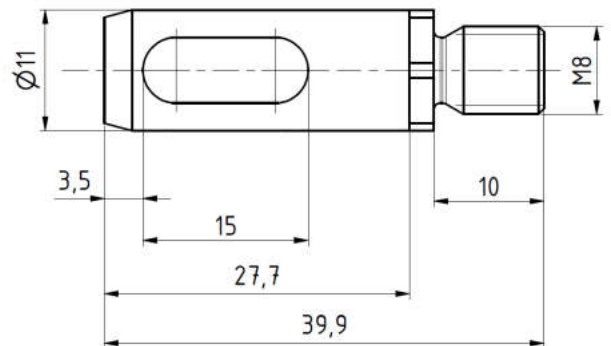
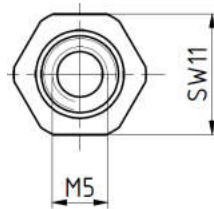
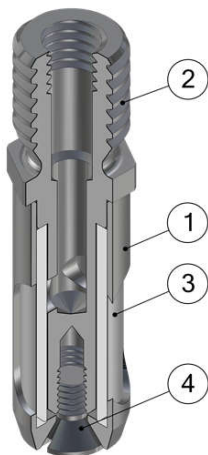
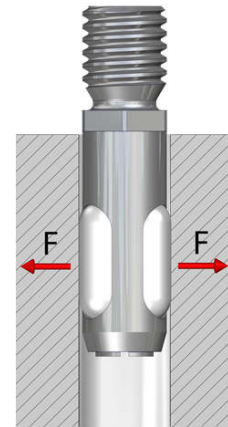
#### Operating mode:

The internal grippers dip into drillings, enlarge their external diameter by expansion of the silicone membrane, under pressure, and thus frictionally engaged hold to the bore wall. When pressure is switched off, the silicone membrane self-reliant retracts into the grippers inside due to its elastic behavior.

#### Advantages:

- Minimum installation size possible
- Width across flats for assembly
- minimum installation depth
- low gripper weight
- Simple gripper principle
- cost-efficient
- quick diaphragm replacemet possible
- Indirect request via pressure switch in the supply line possible

Technical specifications	GIS011
Grip force (at 6 bar) [N]	25
Bore diameter [mm]	11,1 – 12,0
Allowed component weight [kg]	2,5
Gripper weight [kg]	0.016
Compressed air connection Ø	M5
Assembly Ø	M8
Stroke cycles at ideal application conditions	500.000
Width across flats [mm]	SW11
Freelenght a [mm]	3,5



Pos.	Description
1	Hull
2	Arbor
3	Tube
4	Counter sunk screw

#### Internal Gripper Abatement Ø005...

G-GIS011 External diameter 11, screw thread M8

#### Replacement tube

EG-GI011-S for internal gripper counter bore GIS011

© 目錄上所有的功能尺寸及公差僅供參考，本公司保有變更之權力並不事先通知。 ● 請有任何疑問與採購需求請洽詢本公司。

# GiS012 氣囊內孔夾具 Internal Gripper Abatement



### Operating mode:

The internal grippers dip into drillings, enlarge their external diameter by expansion of the silicone membrane, under pressure, and thus frictionally engaged hold to the bore wall. When pressure is switched off, the silicone membrane self-reliant retracts into the grippers inside due to its elastic behavior.

### Advantages:

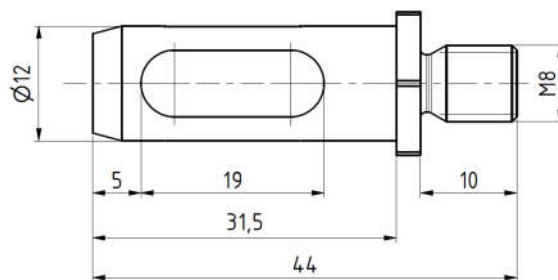
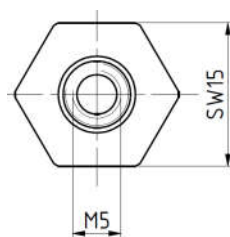
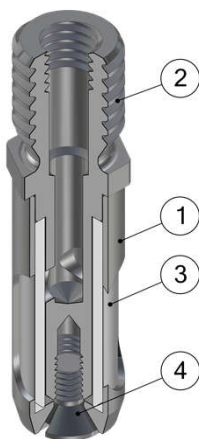
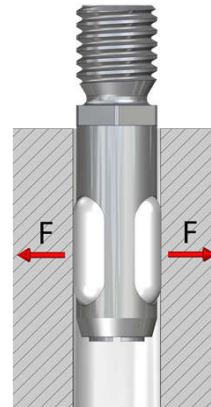
- Minimum installation size possible
- Width across flats for assembly
- minimum installation depth
- low gripper weight
- Simple gripper principle
- cost-efficient
- quick diaphragm replacemet possible
- Indirect request via pressure switch in the supply line possible

GiS  
系列  
GiS005  
GiS006  
GiS007  
GiS008  
GiS009  
GiS010  
GiS011  
**GiS012**  
GiS013  
GiS014  
GiS015  
GiS016  
GiS017  
GiS018  
GiS019  
GiS020

Internal  
Gripper  
Abatement

氣囊  
內孔夾具

Technical specifications	GIS012
Grip force (at 6 bar) [N]	30
Bore diameter [mm]	12,1 – 13,5
Allowed component weight [kg]	3
Gripper weight [kg]	0.023
Compressed air connection Ø	M5
Assembly Ø	M8
Stroke cycles at ideal application conditions	500.000
Width across flats [mm]	SW15
Freelenght a [mm]	5



Pos.	Description
1	Hull
2	Arbor
3	Tube
4	Counter sunk screw

### Internal Gripper Abatement Ø005...

G-GIS012 External diameter 12, screw thread M8

### Replacement tube

EG-GI012-S for internal gripper counter bore GIS012



### GiS 系列

- GiS005
- GiS006
- GiS007
- GiS008
- GiS009
- GiS010
- GiS011
- GiS012
- GiS013**
- GiS014
- GiS015
- GiS016
- GiS017
- GiS018
- GiS019
- GiS020

Internal  
Gripper  
Abatement

氣囊  
內孔夾具



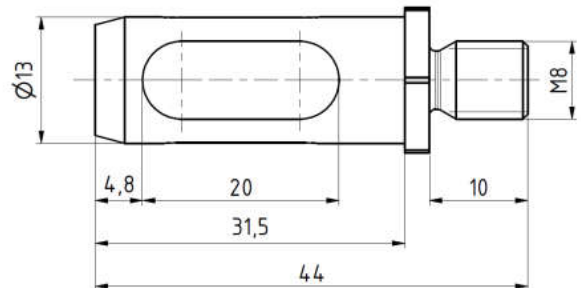
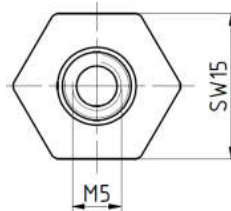
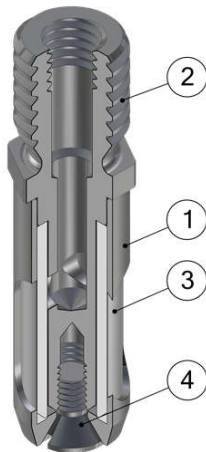
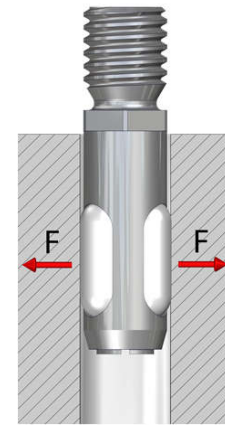
#### Operating mode:

The internal grippers dip into drillings, enlarge their external diameter by expansion of the silicone membrane, under pressure, and thus frictionally engaged hold to the bore wall. When pressure is switched off, the silicone membrane self-reliant retracts into the grippers inside due to its elastic behavior.

#### Advantages:

- Minimum installation size possible
- Width across flats for assembly
- minimum installation depth
- low gripper weight
- Simple gripper principle
- cost-efficient
- quick diaphragm replacemet possible
- Indirect request via pressure switch in the supply line possible

Technical specifications	GiS013
Grip force (at 6 bar) [N]	40
Bore diameter [mm]	13,1 – 14,5
Allowed component weight [kg]	4
Gripper weight [kg]	0.027
Compressed air connection Ø	M5
Assembly Ø	M8
Stroke cycles at ideal application conditions	500.000
Width across flats [mm]	SW15
Freelength a [mm]	4,8



Pos.	Description
1	Hull
2	Arbor
3	Tube
4	Counter sunk screw

#### Internal Gripper Abatement Ø005...

G-GiS013      External diameter 13, screw thread M8

#### Replacement tube

EG-GI013-S      for internal gripper counter bore GiS013

© 目錄上所有的功能尺寸及公差僅供參考，本公司保有變更之權力並不事先通知。 ● 請有任何疑問與採購需求請洽詢本公司。

# GiS014 氣囊內孔夾具 Internal Gripper Abatement



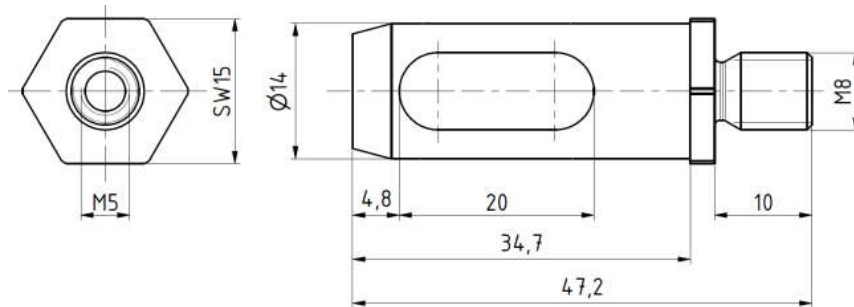
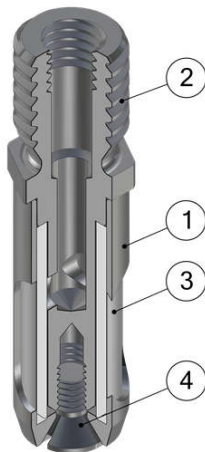
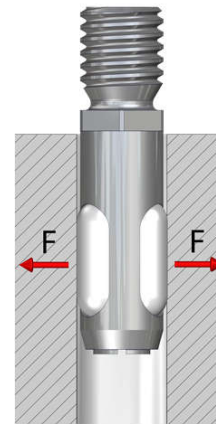
### Operating mode:

The internal grippers dip into drillings, enlarge their external diameter by expansion of the silicone membrane, under pressure, and thus frictionally engaged hold to the bore wall. When pressure is switched off, the silicone membrane self-reliant retracts into the grippers inside due to its elastic behavior.

### Advantages:

- Minimum installation size possible
- Width across flats for assembly
- minimum installation depth
- low gripper weight
- Simple gripper principle
- cost-efficient
- quick diaphragm replacemet possible
- Indirect request via pressure switch in the supply line possible

Technical specifications	GIS014
Grip force (at 6 bar) [N]	45
Bore diameter [mm]	14,1 – 15,5
Allowed component weight [kg]	4,5
Gripper weight [kg]	0.034
Compressed air connection Ø	M5
Assembly Ø	M8
Stroke cycles at ideal application conditions	500.000
Width across flats [mm]	SW15
Freelength a [mm]	4,8



Pos.	Description
1	Hull
2	Arbor
3	Tube
4	Counter sunk screw

### Internal Gripper Abatement Ø005...

G-GIS014 External diameter 14, screw thread M8

### Replacement tube

EG-GI014-S for internal gripper counter bore GIS014

## GiS 系列

- GiS005
- GiS006
- GiS007
- GiS008
- GiS009
- GiS010
- GiS011
- GiS012
- GiS013
- GiS014**
- GiS015
- GiS016
- GiS017
- GiS018
- GiS019
- GiS020

## Internal Gripper Abatement

## 氣囊 內孔夾具

### GiS 系列

- GiS005
- GiS006
- GiS007
- GiS008
- GiS009
- GiS010
- GiS011
- GiS012
- GiS013
- GiS014
- GiS015**
- GiS016
- GiS017
- GiS018
- GiS019
- GiS020

Internal  
Gripper  
Abatement

氣囊  
內孔夾具



#### Operating mode:

The internal grippers dip into drillings, enlarge their external diameter by expansion of the silicone membrane, under pressure, and thus frictionally engaged hold to the bore wall. When pressure is switched off, the silicone membrane self-reliant retracts into the grippers inside due to its elastic behavior.

#### Advantages:

Minimum installation size possible

Width across flats for assembly

minimum installation depth

low gripper weight

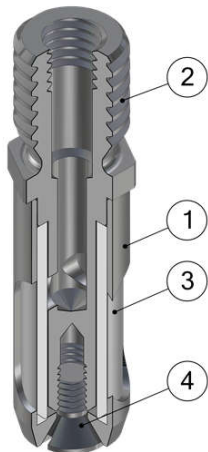
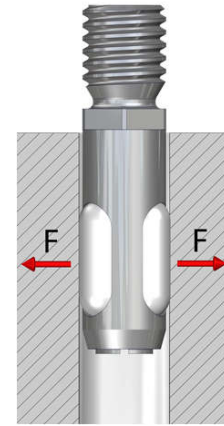
Simple gripper principle

cost-efficient

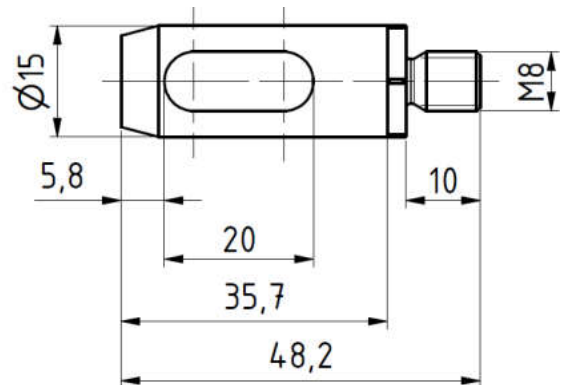
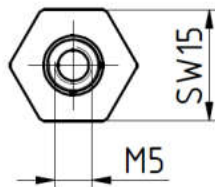
quick diaphragm replacement possible

Indirect request via pressure switch in the supply line possible

Technical specifications	GIS015
Grip force (at 6 bar) [N]	45
Bore diameter [mm]	15,1 – 16,5
Allowed component weight [kg]	4,5
Gripper weight [kg]	0.04
Compressed air connection Ø	M5
Assembly Ø	M8
Stroke cycles at ideal application conditions	500.000
Width across flats [mm]	SW15
Freelength a [mm]	5,8



Pos.	Description
1	Hull
2	Arbor
3	Tube
4	Counter sunk screw



#### Internal Gripper Abatement Ø005...

G-GIS015 External diameter 15, screw thread M8

#### Replacement tube

EG-GI015-S for internal gripper counter bore GIS015

© 目錄上所有的功能尺寸及公差僅供參考，本公司保有變更之權力並不事先通知。 ● 請有任何疑問與採購需求請洽詢本公司。

# GiS016 氣囊內孔夾具 Internal Gripper Abatement



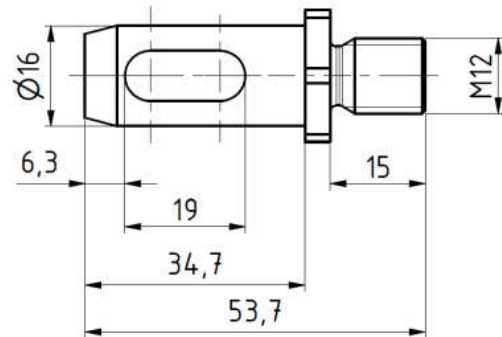
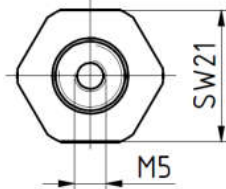
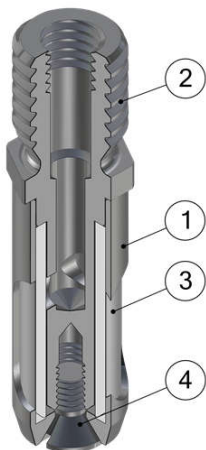
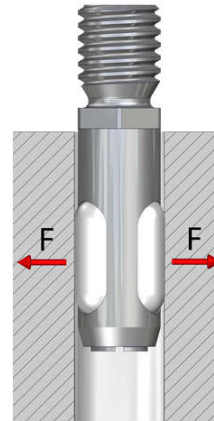
### Operating mode:

The internal grippers dip into drillings, enlarge their external diameter by expansion of the silicone membrane, under pressure, and thus frictionally engaged hold to the bore wall. When pressure is switched off, the silicone membrane self-reliant retracts into the grippers inside due to its elastic behavior.

### Advantages:

- Minimum installation size possible
- Width across flats for assembly
- Minimum installation depth
- Low gripper weight
- Simple gripper principle
- Cost-efficient
- Quick diaphragm replacemet possible
- Indirect request via pressure switch in the supply line possible

Technical specifications	GIS016
Grip force (at 6 bar) [N]	50
Bore diameter [mm]	16,1 – 17,5
Allowed component weight [kg]	5
Gripper weight [kg]	0.061
Compressed air connection Ø	M5
Assembly Ø	M12
Stroke cycles at ideal application conditions	500.000
Width across flats [mm]	SW21
Freelength a [mm]	6,3



Pos.	Description
1	Hull
2	Arbor
3	Tube
4	Counter sunk screw

### Internal Gripper Abatement Ø005...

G-GIS016 External diameter 16, screw thread M12

### Replacement tube

EG-GI016-S for internal gripper counter bore GIS016

## GiS 系列

- GiS005
- GiS006
- GiS007
- GiS008
- GiS009
- GiS010
- GiS011
- GiS012
- GiS013
- GiS014
- GiS015

## GiS016

- GiS017
- GiS018
- GiS019
- GiS020

## Internal Gripper Abatement

## 氣囊 內孔夾具

### GiS 系列

- GiS005
- GiS006
- GiS007
- GiS008
- GiS009
- GiS010
- GiS011
- GiS012
- GiS013
- GiS014
- GiS015
- GiS016
- GiS017**
- GiS018
- GiS019
- GiS020

Internal  
Gripper  
Abatement

氣囊  
內孔夾具



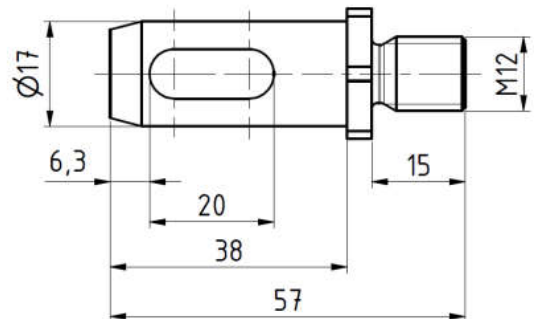
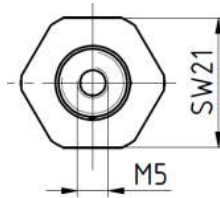
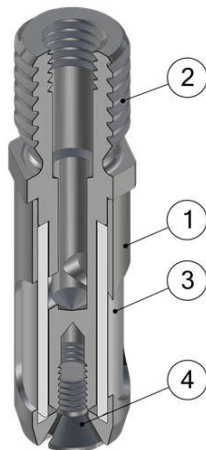
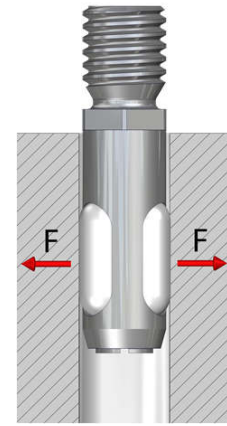
#### Operating mode:

The internal grippers dip into drillings, enlarge their external diameter by expansion of the silicone membrane, under pressure, and thus frictionally engaged hold to the bore wall. When pressure is switched off, the silicone membrane self-reliant retracts into the grippers inside due to its elastic behavior.

#### Advantages:

- Minimum installation size possible
- Width across flats for assembly
- minimum installation depth
- low gripper weight
- Simple gripper principle
- cost-efficient
- quick diaphragm replacement possible
- Indirect request via pressure switch in the supply line possible

Technical specifications	GiS017
Grip force (at 6 bar) [N]	50
Bore diameter [mm]	17,1 – 18,5
Allowed component weight [kg]	5
Gripper weight [kg]	0.072
Compressed air connection Ø	M5
Assembly Ø	M12
Stroke cycles at ideal application conditions	500.000
Width across flats [mm]	SW21
Freelength a [mm]	6,3



Pos.	Description
1	Hull
2	Arbor
3	Tube
4	Counter sunk screw

#### Internal Gripper Abatement Ø005...

G-GiS017 External diameter 17, screw thread M12

#### Replacement tube

EG-Gi017-S for internal gripper counter bore GiS017

© 目錄上所有的功能尺寸及公差僅供參考，本公司保有變更之權力並不事先通知。 ● 請有任何疑問與特殊需求請洽詢本公司。

# GiS018 氣囊內孔夾具 Internal Gripper Abatement



### Operating mode:

The internal grippers dip into drillings, enlarge their external diameter by expansion of the silicone membrane, under pressure, and thus frictionally engaged hold to the bore wall. When pressure is switched off, the silicone membrane self-reliant retracts into the grippers inside due to its elastic behavior.

### Advantages:

- Minimum installation size possible
- Width across flats for assembly
- minimum installation depth
- low gripper weight
- Simple gripper principle
- cost-efficient
- quick diaphragm replacemet possible
- Indirect request via pressure switch in the supply line possible

## GiS 系列

- GiS005
- GiS006
- GiS007
- GiS008
- GiS009
- GiS010
- GiS011
- GiS012
- GiS013
- GiS014
- GiS015
- GiS016
- GiS017

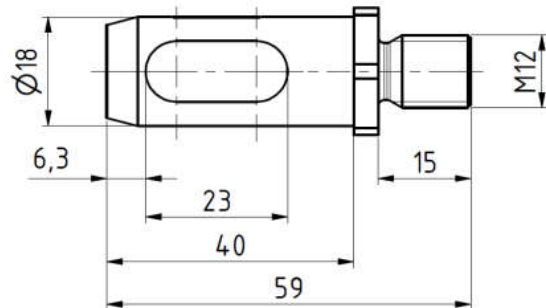
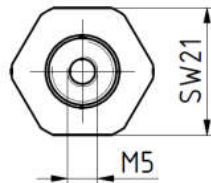
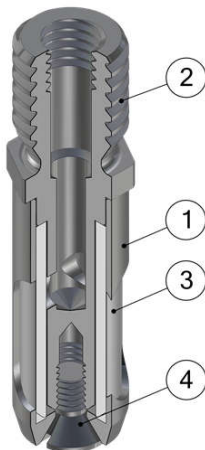
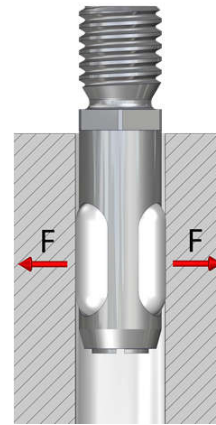
## GiS018

- GiS019
- GiS020

## Internal Gripper Abatement

## 氣囊內孔夾具

Technical specifications	GIS018
Grip force (at 6 bar) [N]	50
Bore diameter [mm]	18,1 – 19,5
Allowed component weight [kg]	5
Gripper weight [kg]	0.08
Compressed air connection Ø	M5
Assembly Ø	M12
Stroke cycles at ideal application conditions	500.000
Width across flats [mm]	SW21
Freelenght a [mm]	6,3



Pos.	Description
1	Hull
2	Arbor
3	Tube
4	Counter sunk screw

### Internal Gripper Abatement Ø005...

G-GIS018 External diameter 18, screw thread M12

### Replacement tube

EG-GI018-S for internal gripper counter bore GIS018

### GiS 系列

- GiS005
- GiS006
- GiS007
- GiS008
- GiS009
- GiS010
- GiS011
- GiS012
- GiS013
- GiS014
- GiS015
- GiS016
- GiS017
- GiS018

### GiS019 GiS020

Internal  
Gripper  
Abatement

氣囊  
內孔夾具



#### Operating mode:

The internal grippers dip into drillings, enlarge their external diameter by expansion of the silicone membrane, under pressure, and thus frictionally engaged hold to the bore wall. When pressure is switched off, the silicone membrane self-reliant retracts into the grippers inside due to its elastic behavior.

#### Advantages:

Minimum installation size possible

Width across flats for assembly

minimum installation depth

low gripper weight

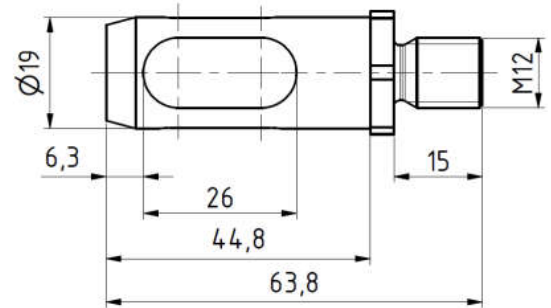
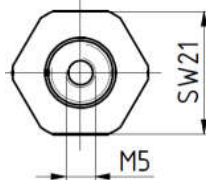
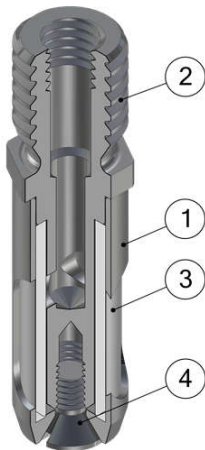
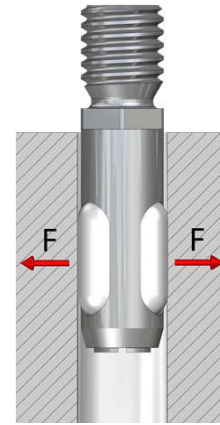
Simple gripper principle

cost-efficient

quick diaphragm replacement possible

Indirect request via pressure switch in the supply line possible

Technical specifications	GIS019
Grip force (at 6 bar) [N]	60
Bore diameter [mm]	19,1 – 21,0
Allowed component weight [kg]	6
Gripper weight [kg]	0.096
Compressed air connection Ø	M5
Assembly Ø	M12
Stroke cycles at ideal application conditions	500.000
Width across flats [mm]	SW21
Freelength a [mm]	6,3



Pos.	Description
1	Hull
2	Arbor
3	Tube
4	Counter sunk screw

#### Internal Gripper Abatement Ø005...

G-GIS019 External diameter 19, screw thread M12

#### Replacement tube

EG-GI019-S for internal gripper counter bore GIS019

© 目錄上所有的功能尺寸及公差僅供參考，本公司保有變更之權力並不事先通知。 ● 請有任何疑問與特殊需求請洽詢本公司。

# GiS020 氣囊內孔夾具 Internal Gripper Abatement



### Operating mode:

The internal grippers dip into drillings, enlarge their external diameter by expansion of the silicone membrane, under pressure, and thus frictionally engaged hold to the bore wall. When pressure is switched off, the silicone membrane self-reliant retracts into the grippers inside due to its elastic behavior.

### Advantages:

- Minimum installation size possible
- Width across flats for assembly
- minimum installation depth
- low gripper weight
- Simple gripper principle
- cost-efficient
- quick diaphragm replacemet possible
- Indirect request via pressure switch in the supply line possible

## GiS 系列

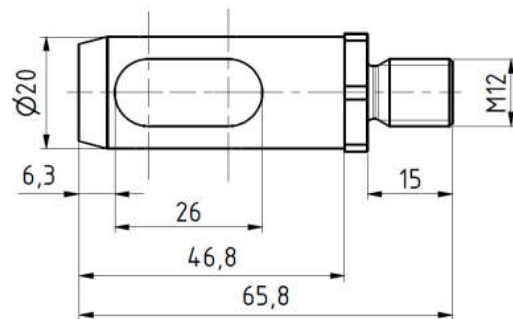
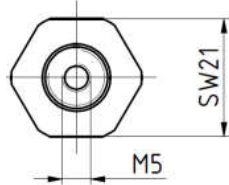
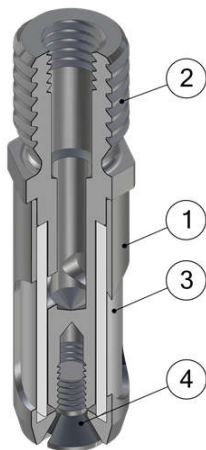
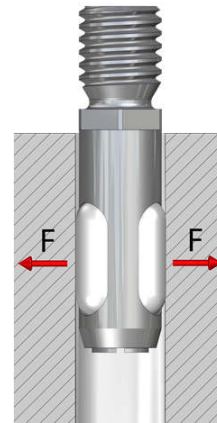
- GiS005
- GiS006
- GiS007
- GiS008
- GiS009
- GiS010
- GiS011
- GiS012
- GiS013
- GiS014
- GiS015
- GiS016
- GiS017
- GiS018
- GiS019

## GiS020

### Internal Gripper Abatement

### 氣囊 內孔夾具

Technical specifications	GIS020
Grip force (at 6 bar) [N]	60
Bore diameter [mm]	20,1 –21,5
Allowed component weight [kg]	6
Gripper weight [kg]	0.11
Compressed air connection Ø	M5
Assembly Ø	M12
Stroke cycles at ideal application conditions	500.000
Width across flats [mm]	SW21
Freelenght a [mm]	6,3



Pos.	Description
1	Hull
2	Arbor
3	Tube
4	Counter sunk screw

### Internal Gripper Abatement Ø005...

G-GIS020 External diameter 20, screw thread M12

### Replacement tube

EG-GI020-S for internal gripper counter bore GIS020